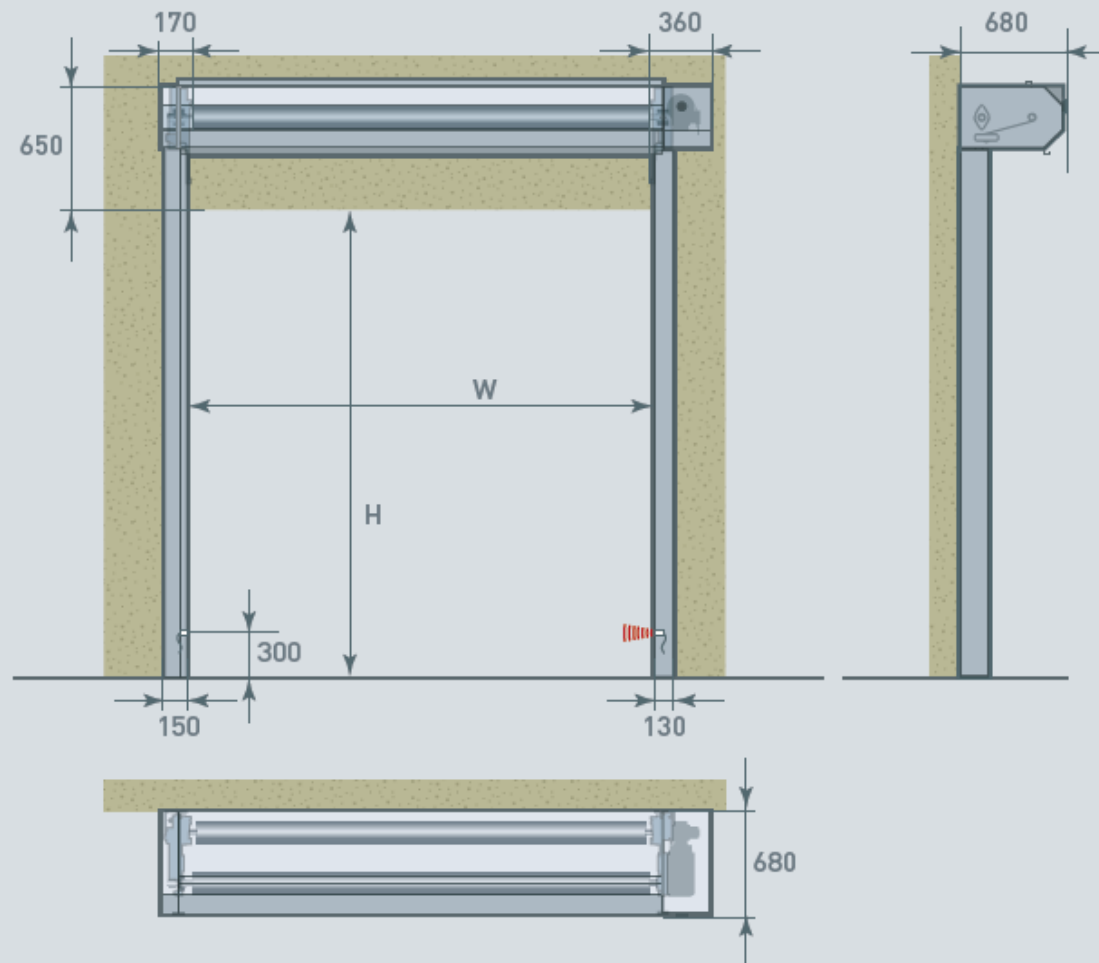
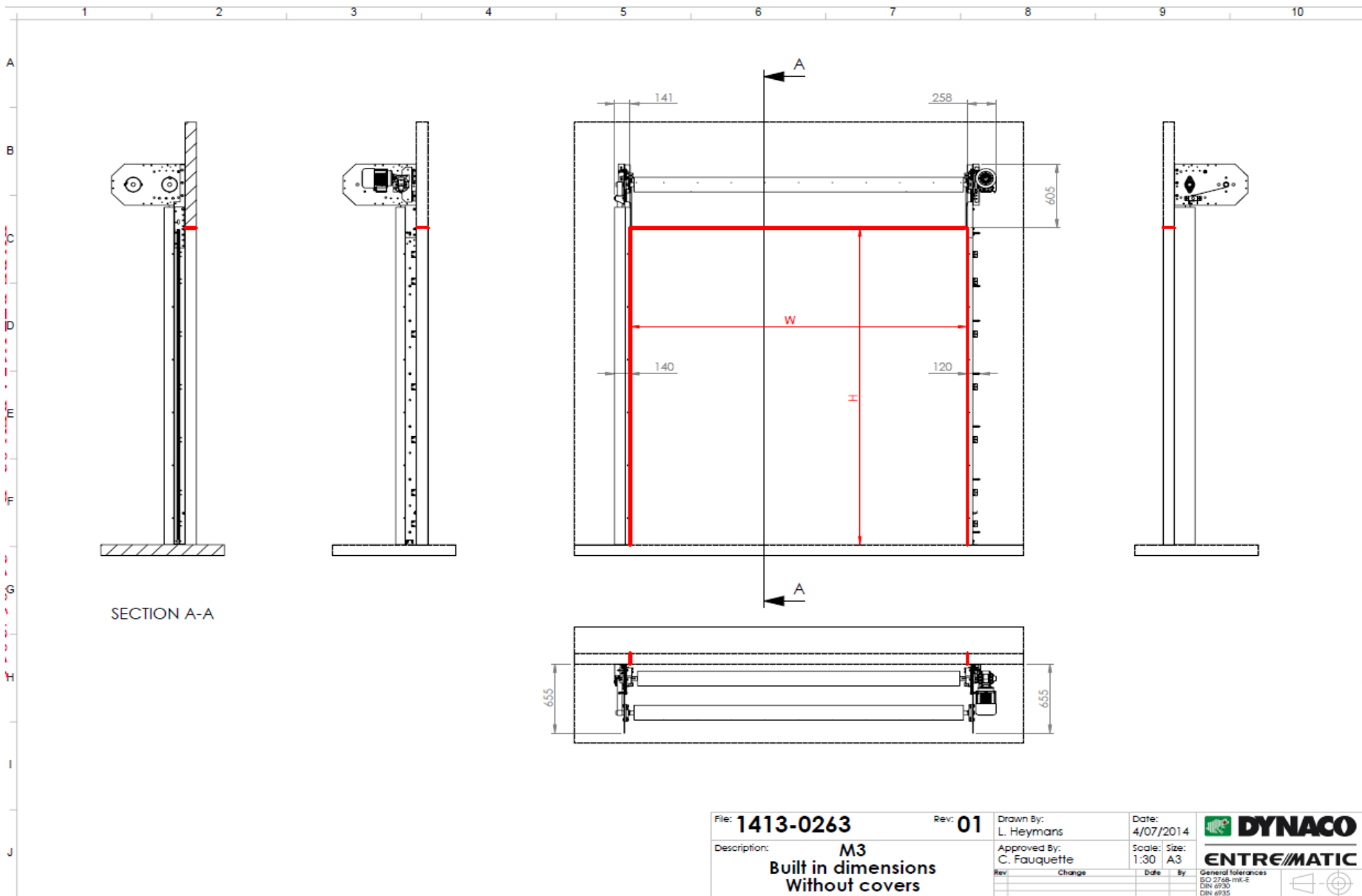


## Dimensions and installation requirements Dynaco M3 All Weather






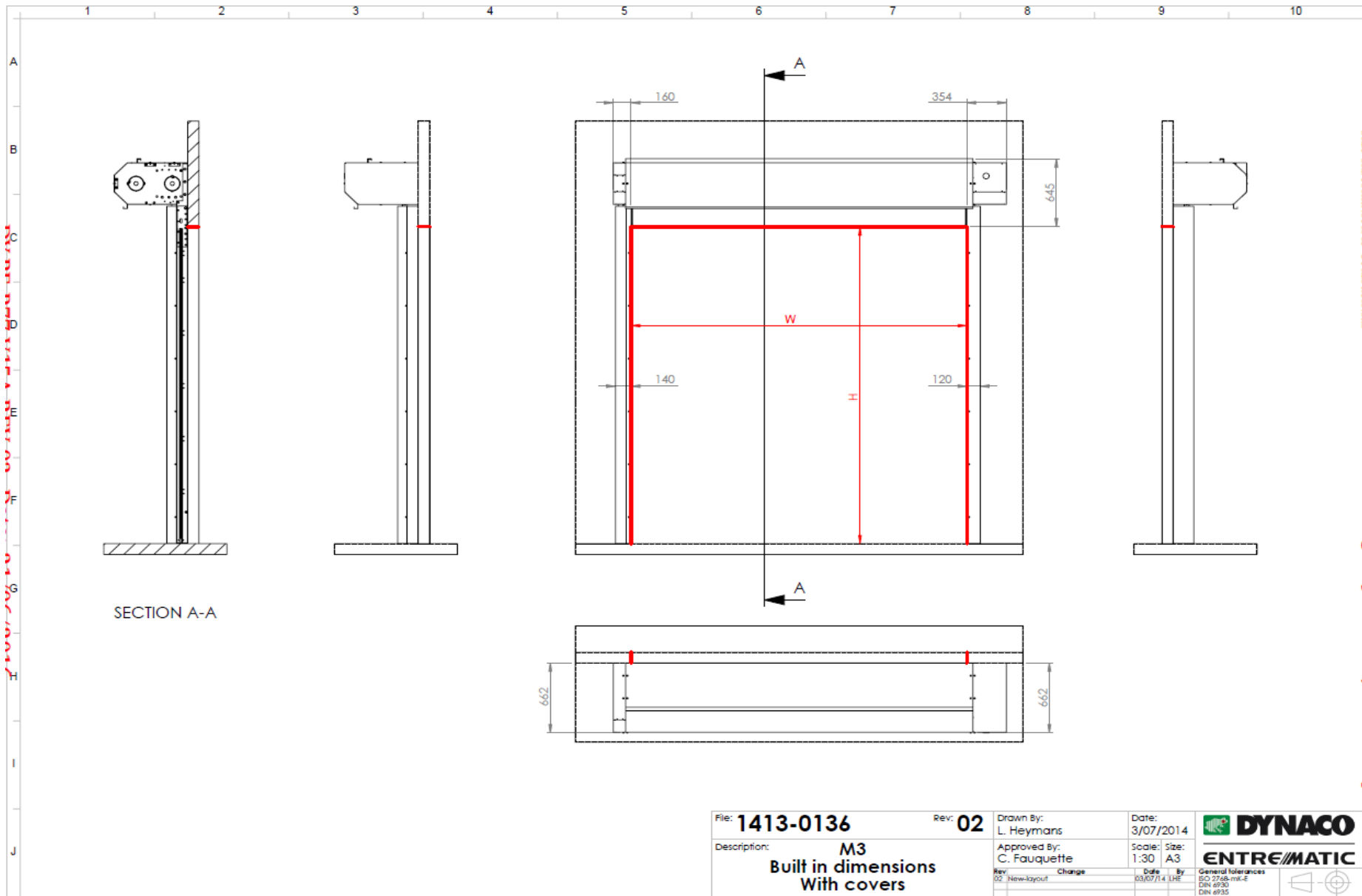
All indicated dimensions are net: the space necessary for mounting and maintenance has to be provided. Remark: drum cover available for doors up to 5900mm wide.

REMARK: Based on the risk analysis of the environment, extra push buttons, detectors and covers might be required.

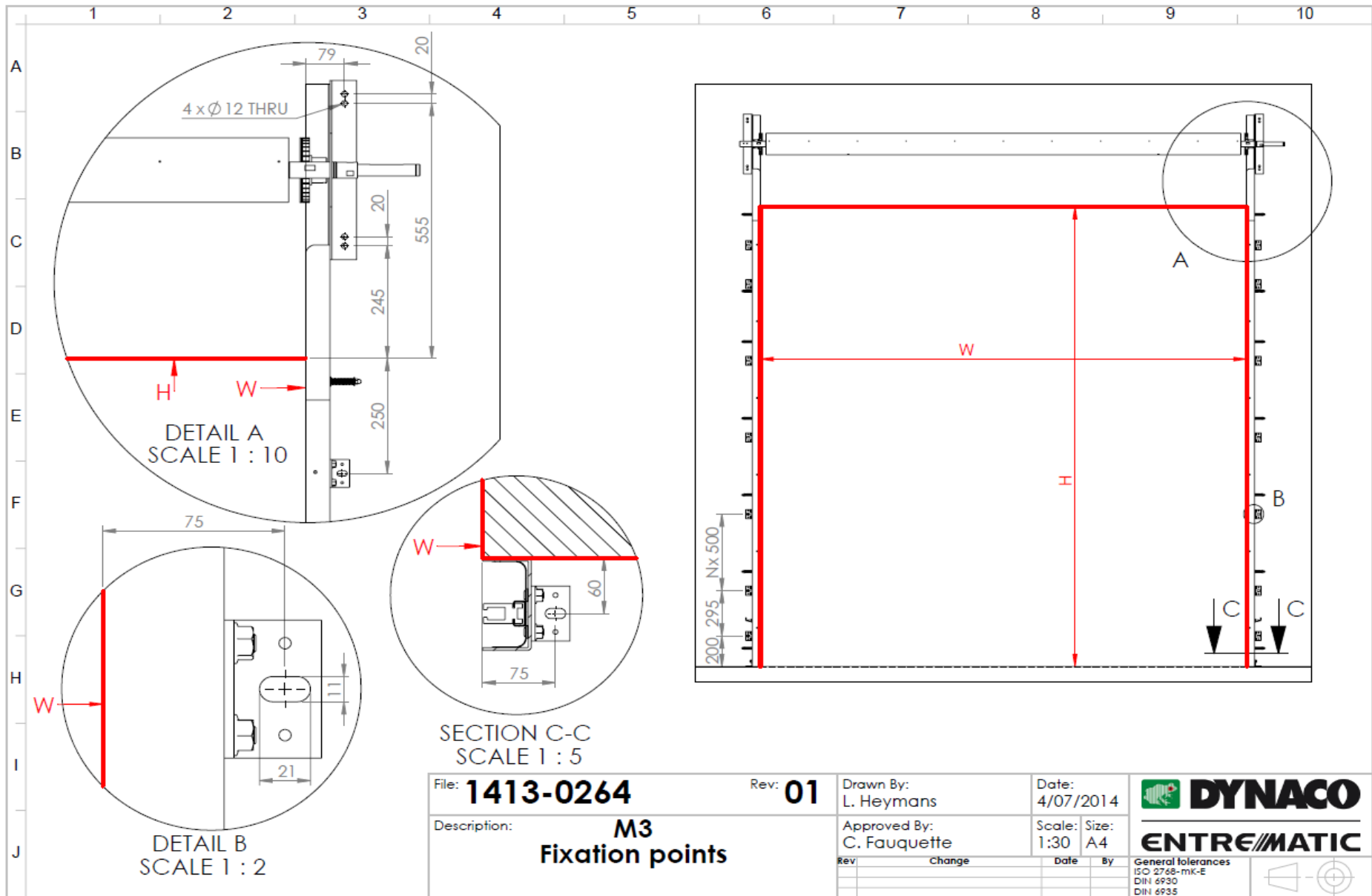


SECTION A-A

File:	<b>1413-0263</b>	Rev:	<b>01</b>	Drawn By:	L. Heymans	Date:	4/07/2014	
Description:	<b>M3</b>		Approved By:	C. Fauquette	Scale:	1:30	Size:	A3
	<b>Built in dimensions</b>		Rev:	Change	Date	By	General tolerances ISO 2768-mK-E DIN 6130 DIN 6935	
	<b>Without covers</b>						  	



File: <b>1413-0136</b>	Rev: <b>02</b>	Drawn By: L. Heymans	Date: 3/07/2014	
Description: <b>M3 Built in dimensions With covers</b>		Approved By: C. Fauquette	Scale: Size: 1:30 A3	
Rev: 02	Change: New-layout	Date: 03/07/14	By: LHE	General tolerances ISO 2768-mk-E DN 6930 DN 6935



File: **1413-0264**  
 Description: **M3**  
**Fixation points**

Rev: **01**

Drawn By:  
L. Heymans

Approved By:  
C. Fauquette

Date:  
4/07/2014

Scale: 1:30  
Size: A4



General tolerances  
ISO 2768-mk-E  
DIN 6930  
DIN 6935



rev	Change	Date	By

