



II 2 G Ex db eb h ia IIC T4 GB  
II 2 D Ex h ia tb IIIB T135°C Db  
II 3 G Ex db eb h ia mc IIC T4 Gc  
II 3 D Ex h ia mc tb IIIB T135°C Dc



**DYNACO**  
High Performance Doors



**S-5**

CAT. 2 ATEX  
CAT. 3 ATEX

COMPACT  
POWER  
ALL-WEATHER

inside-outside  
door



[www.dynacodoor.com](http://www.dynacodoor.com)

All synthetic parts in antistatic material



Dynaco was founded in 1987, dedicated to finding a solution for any damages caused by - and to - high-speed roll-up doors. Inspired by flexible pool covers, Dynaco designed the first ever flexible, self-repairing door, known as the Dynaco Classic.

Later, another innovation followed: Dynaco's revolutionary Push-Pull technology, marketed as the "magic" door. Thanks to this continuous innovative approach and passion, Dynaco is known for producing "the most copied door in the world".

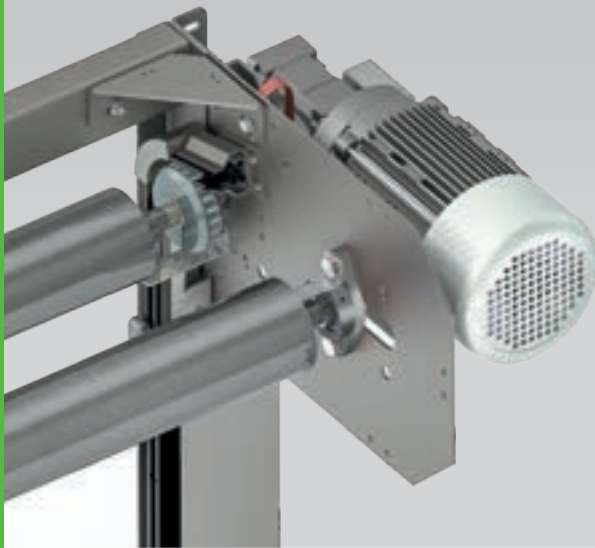
The company distributes doors through a network of professionals only, active in 5 continents.

With its most extensive product range in the industry, Dynaco stays always AHEAD. And always operates with the end-user in mind.

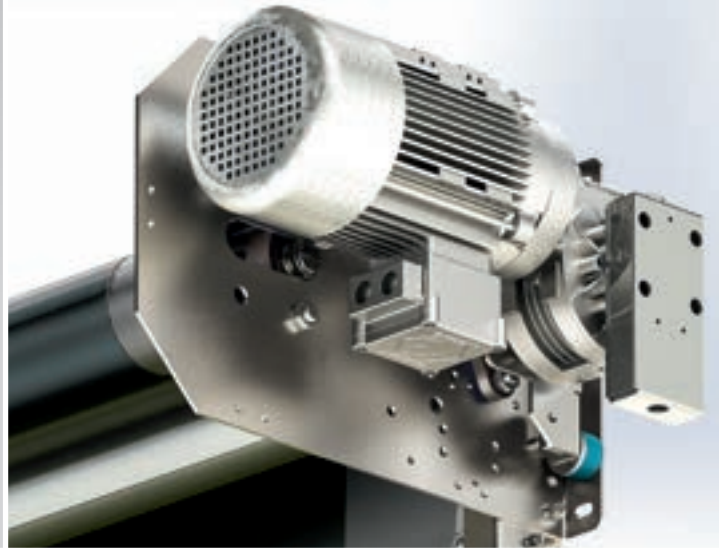
**Dynaco offers 2 different solutions for ATEX environments, both for internal and external applications: Dynaco Cat. 3 ATEX and Cat 2 ATEX.**

**With their unique Push-Pull technology, Dynaco Cat. 3 and Dynaco Cat. 2 are able to perform in the most windy of conditions and in very high-traffic areas.**

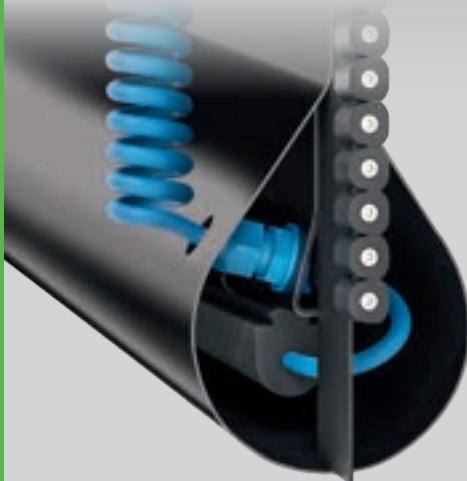
Complete structure in stainless steel



Atex motor, gearbox and encoder



Bottom edge detection via intrinsic safety barrier



Standard earthing kit



Dynaco Atex High Performance Doors are your best asset to reduce any risk of explosion: officially approved by the Apragaz notified body for use in potentially explosive environments.

All metal parts are stainless steel. Any non-metallic parts, such as its curtain, are composed of antistatic or electrical conductive materials, thus avoiding build up of static electricity, which could generate sparks.

Both its operating speed and perfect seal improve your traffic flows, while providing employee comfort, environmental control and energy savings.

Fully self-reinserting, the Dynaco Atex doors will automatically readjust in its side guides whenever the curtain accidentally gets hit.

## Why this is the right door for your business?



### Explosion-proof

ATEX zones come with complex safety requirements so Dynaco Atex doors leave nothing to chance. All metal parts are made of stainless steel, while all non-metallic parts with a surface over 20 cm<sup>2</sup> have been replaced by antistatic materials. In addition, bottom edge detectors and photocells are protected via an intrinsically safe barrier (Ex i).



### Atex engineered

Dynaco Atex doors were designed with the latest Atex EU standards in mind. Every single door is inspected by Apragaz, an accredited notified body for Atex regulations. Only after inspection do they get certified according to the European 2014/34/EU directive.



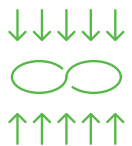
### Uninterrupted workflow

Our high-performance doors are designed to guarantee continuous operation, no matter the traffic conditions.



### Environment control

Dynaco doors not only open but also close fast. Their opening time is minimal to avoid temperature fluctuations that may affect product quality.



### Suited to heavy-duty operations

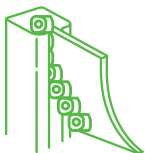
Thanks to their unique drive system and high-quality components, Dynaco push-pull doors are recommended for high-traffic situations.



### Extremely safe

At Dynaco we never compromise on safety. All doors operate according to the highest safety standards, thanks to their soft bottom edge and our self-testing safety devices.

## Why Dynaco?



### Automatic self-reinsertion

At Dynaco we invented the crash-forgiving, self-reinserting door. The one and only original. Its curtain automatically reinserts when dislodged, without intervention. This means: no repair costs, nor costly production downtime.



### Push-Pull Technology

Thanks to our patented push-pull technology - our doors' most famous advantage - every Dynaco door closes with a mechanically-driven side guides system, which ensures continuous operation.



### Frequency converter

Dynaco doors operate with the most advanced drive unit in the industry. The combination of a frequency-driven motor and encoder offer smooth operation and reliability. Any wearable elements are reduced to a minimum.



### Dynalogue control box

All doors can be fitted with a touch-screen control unit: our Dynalogue 5 control box. The most user-friendly, self-diagnostic option, which allows for remote control management. It increases efficiency and helps you monitor any door's status. At any time, from any desk.



### Wind-resistant

Our doors offer wind-resistant operation, up to wind load class 5. They are equipped with our patented push-pull technology and side frame assembly, without blade or brush systems.



### Comfort of use

Dynaco doors are suited to a wide range of applications. Thanks to our different opening options and certified safety-devices, you are safe whenever you cross a Dynaco door.



### Certified performance

Performance of all Dynaco doors has been tested and certified by a third-party notifying body.



### Sensitive, soft-bottom edge and photocells

All Dynaco doors come with 2 safety devices: a wireless, bottom-edge obstacle-detection device called AWDD, and a pair of photocells to monitor the doorway transit area.



Dynaco offers a wide range of products for several industrial applications.  
Find out more on [www.dynacodoor.com](http://www.dynacodoor.com).

# S-5

CAT. 2 ATEX  
CAT. 3 ATEX

COMPACT  
POWER  
ALL-WEATHER

# Always ahead



Dynaco Europe NV  
Waverstraat 21 B-9310 Moorsel-Aalst (Belgium)  
Tel. +32 53 72 98 98 info@dynacodoor.com  
[www.dynacodoor.com](http://www.dynacodoor.com)

#### About Dynaco

Dynaco is the world leader in high speed door technology. It offers state of the art solutions for both commercial and industrial applications, including sectional overhead doors.

Founded in 1987, Dynaco has acquired an extensive expertise in high performance doors. Yet it continues to invest in order to exceed your expectations of quality and performance. A network of certified and dedicated partners ensures an optimal service to customers all over Europe.

Dynaco is part of the ASSA ABLOY Group, the world leader in access solutions. Every day, we help billions of people experience a more open world.