

DETAIL A  
SCALE 1 : 10

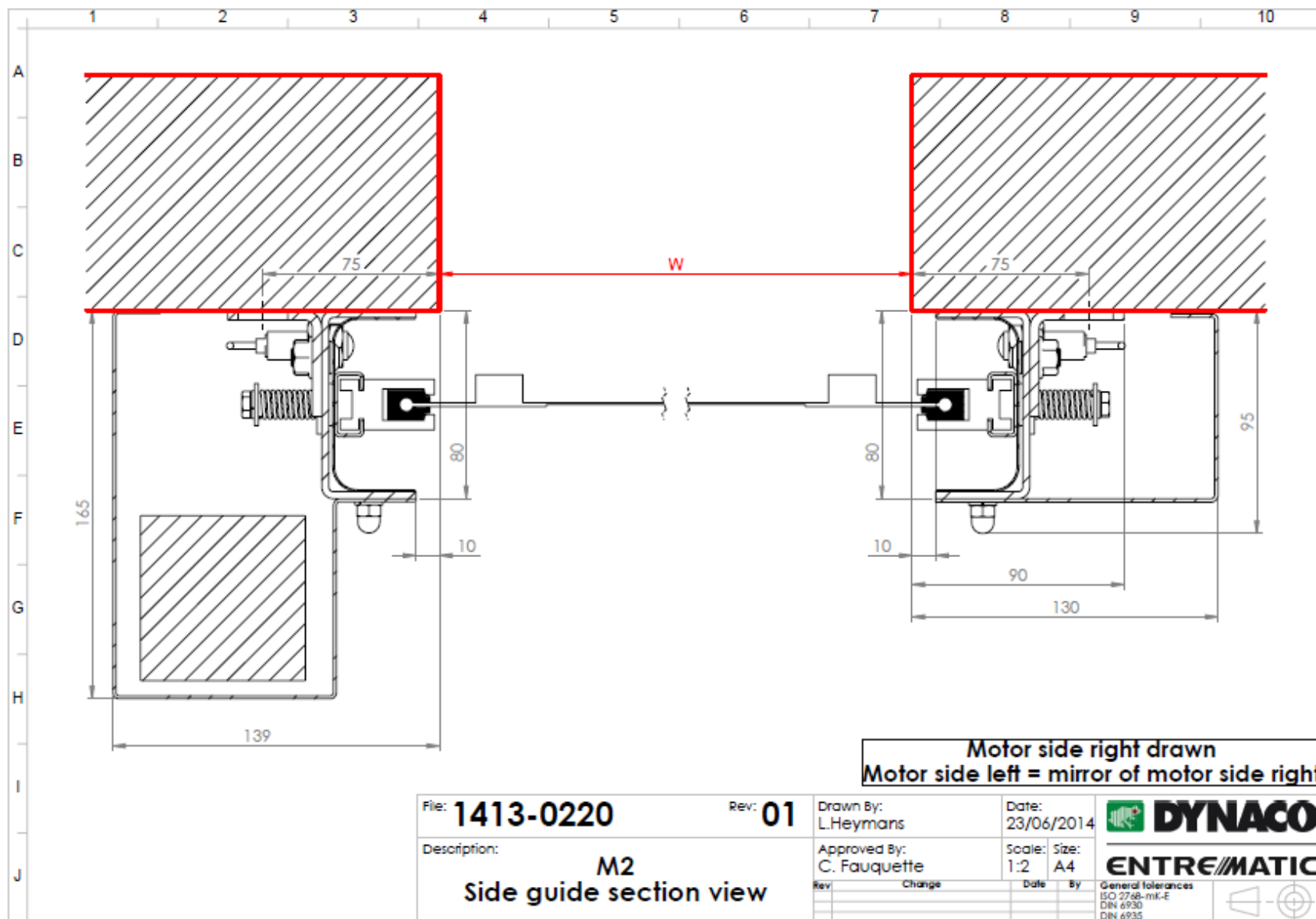
SECTION C-C  
SCALE 1 : 5

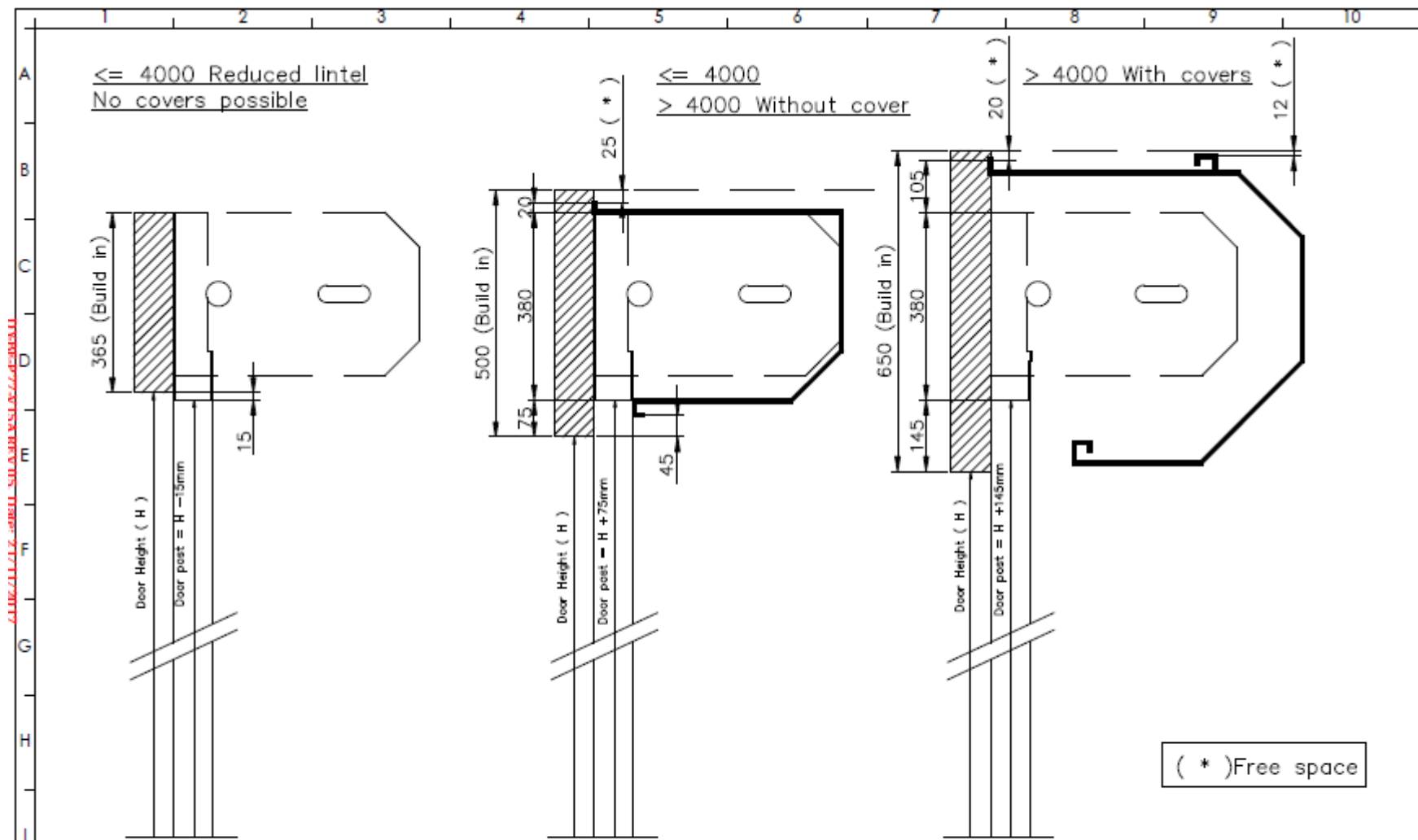
DETAIL B  
SCALE 1 : 2

File: **1413-0221** Rev: **01**  
 Description: **Compact & Power M2:  
 Fixation points  
 > 4000 mm with drum cover**

Drawn By: L.Heymans Date: 20/06/2014  
 Approved By: C. Fauquette Scale: 1:30 Size: A4  
 Rev: Change Date By

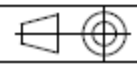
**DYNACO**  
**ENTRE//MATIC**  
 General tolerances  
 ISO 2768-mk-E  
 DIN 6130  
 DIN 6135

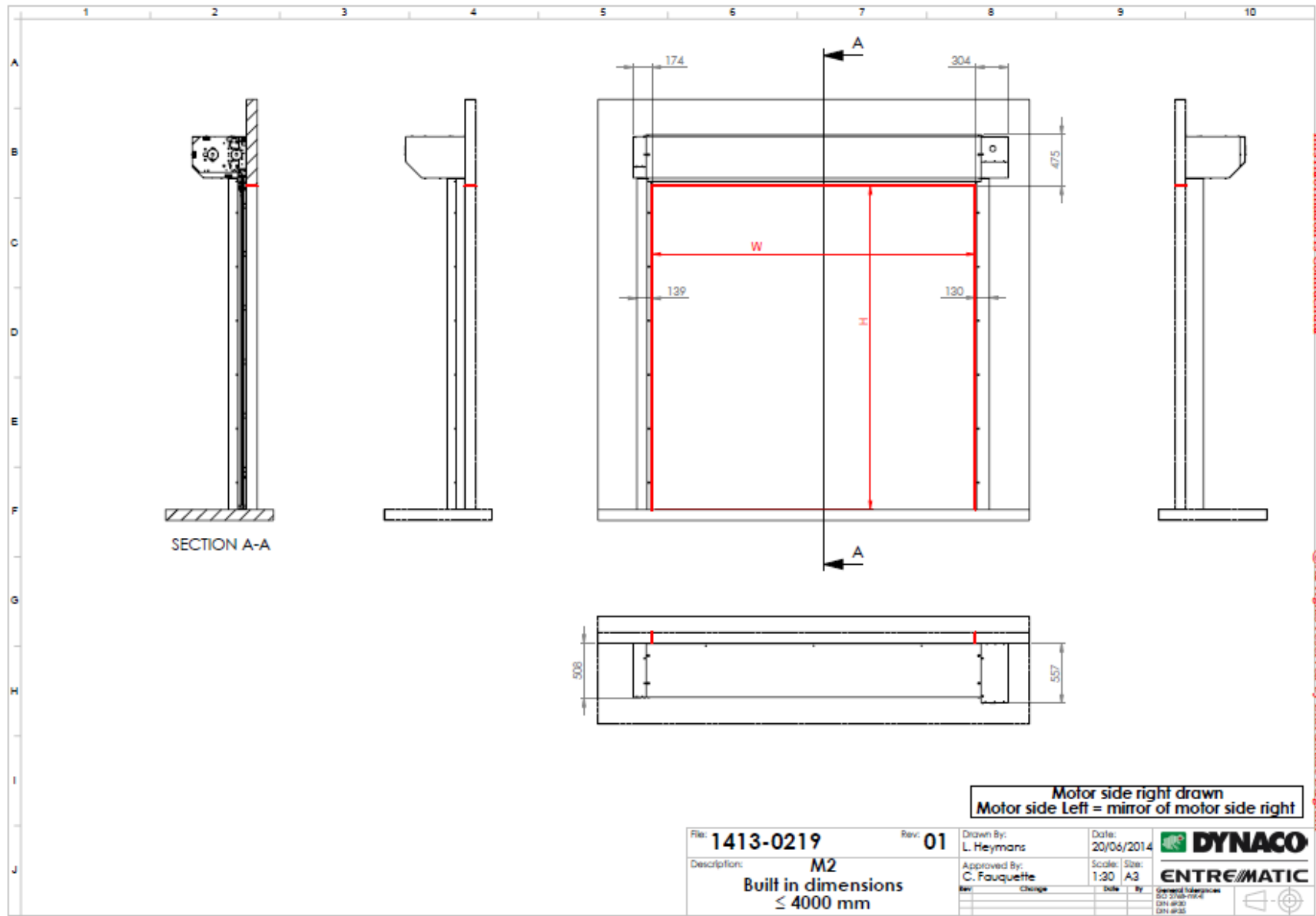




C:\MEZ\111\12...SIBEL\SUB\BIB\KSL\02\46000011

File: <b>M2-08-1006</b>		Rev: <b>B</b>		Date: <b>02/12/2015</b>			
Description: <b>M2 Build in dimension Overview</b>		Drawn By: <b>L. Heymans</b>		Scale: <b>/</b>		Size: <b>A4</b>	
		Approved By: <b>C. Fauquette</b>		Date: <b>02/12/15</b>		By: <b>LD</b>	
						General tolerances ISO 2768-mk-E DIN 4935 DIN 4935	





This Information is Confidential

© All rights reserved by Entrematic Belgium

Motor side right drawn  
Motor side Left = mirror of motor side right

File: <b>1413-0219</b>	Rev: <b>01</b>	Drawn By: L. Heymans	Date: 20/06/2014	 <b>DYNACO</b> <b>ENTRE/MATIC</b>
Description: <b>M2</b> <b>Built in dimensions</b> <b>≤ 4000 mm</b>		Approved By: C. Fauquette	Scale: Size: 1:20 A3	
		Rev: Change	Date	By

General Manager  
SC 3748-M2-E  
DN 4030  
DN 4035  
© All rights reserved by Dynaco